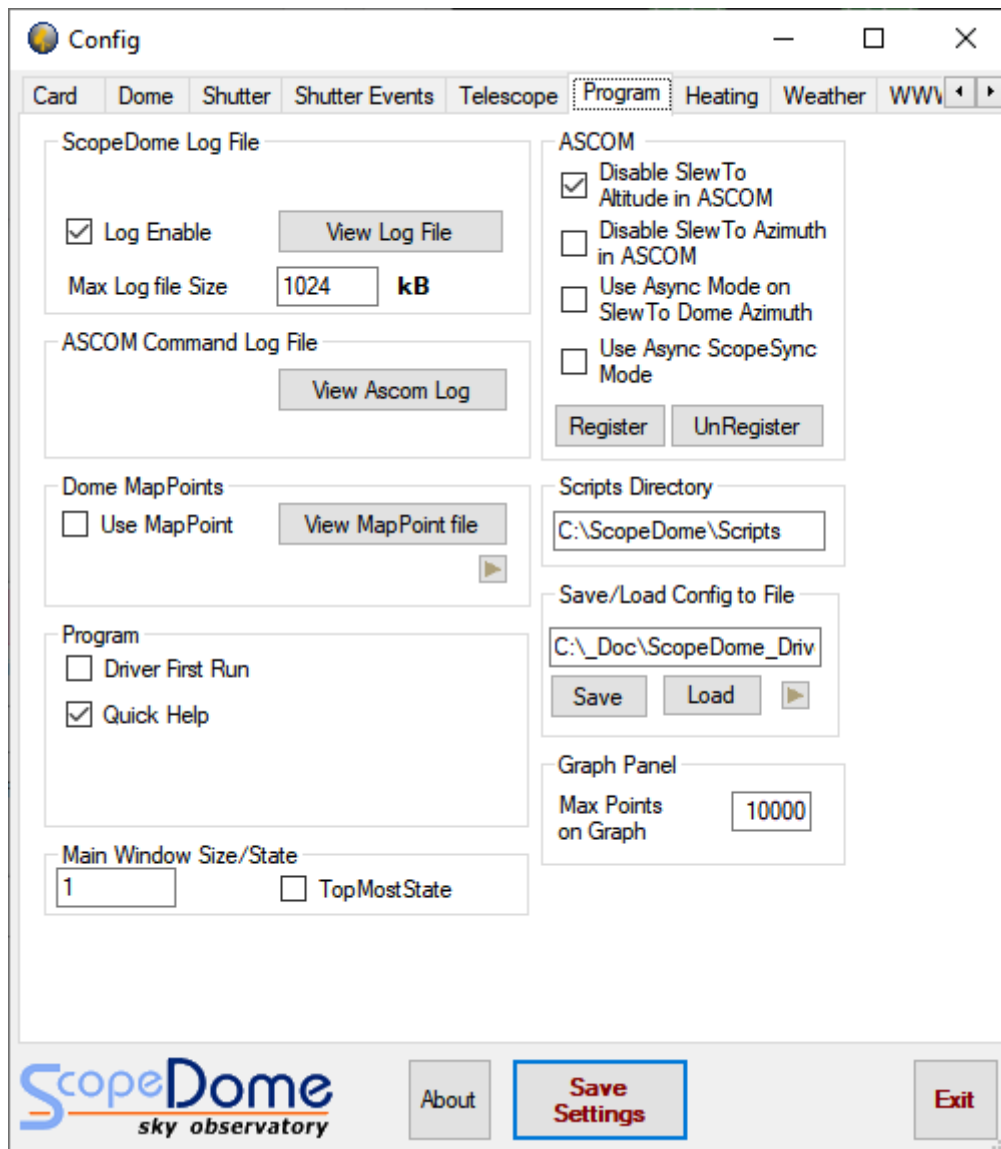


## How to upgrade ScopeDome dome driver?

1. First, please run the old driver and open **Config** window.
2. Next please open **Program** Tab.
3. In **Save/Load Config to File** box press **Save** button.
4. Now you can uninstall the old driver.  
-----
5. Next install the new driver and run it.
6. In **Config>Program** tab press **Load** button.
7. Finally press **Save Settings** button.



## How to install ScopeDome dome driver?

1. Please remember to at first install latest ASCOM platform version.
2. First, please run the installation file: **ScopeDomeUSB DomeDriver ver 5.5.5.18.exe** (or later version) from **Software** directory on CD Rom attached to the package or download the installer from our web site.
3. **Please do not change standard installation directory: C:\ScopeDome**
4. Open **Config** Window
5. Select **Dome Type**
6. Select **Card Type**
7. Click **Save Settings** button
8. Click **Restore Default** button
9. Select **Connect by** (we recomendate to use Ethernet connection option)
10. Click **Save Settings** button again
11. Click Exit
12. Restart the driver

The screenshot shows the 'Config' window for the ScopeDome driver. The window has a title bar with 'Config' and standard window controls. Below the title bar is a tabbed interface with tabs for 'Card', 'Dome', 'Shutter', 'Shutter Events', 'Telescope', 'Program', 'Heating', 'Weather', and 'WWW'. The 'Card' tab is active.

**Card and Dome type**

Dome Type: ScopeDome 3M  
Card Type: ScopeDome Arduino Dome v10 f13

Buttons: Restore Default, Send config to card

**Card Configuration**

USB Card Loop Time: 50 ms  
Encoder Debounce Time: 2 ms  
Sensors Debounce Time: 2 ms  
Encoder Max Value: 15000 clk  
Encoder Min Value: -15000 clk  
Encoder value for 360°: 3280 clk  
Dome inertia calibration steps: 120 step  
Dome position compare precision: 10 clk

Disable Derotate on Inertia Calibration  
 Disable Calib. Request  
 Negative Home Sensor

**ScopeDome Arduino Card**

Connect by: Ethernet  
IP Address: 192.168.001.120  
Password: default  
COM port: COM7

Buttons: Reset Master, Reset Slave

**Dome Counters and encoder calib.**

Buttons: Reset Encoder ENC = 0, Calibrate Dome Motor Inertia, Calibrate Dome Encoder

Footer: ScopeDome sky observatory logo, About, Save Settings, Exit buttons.